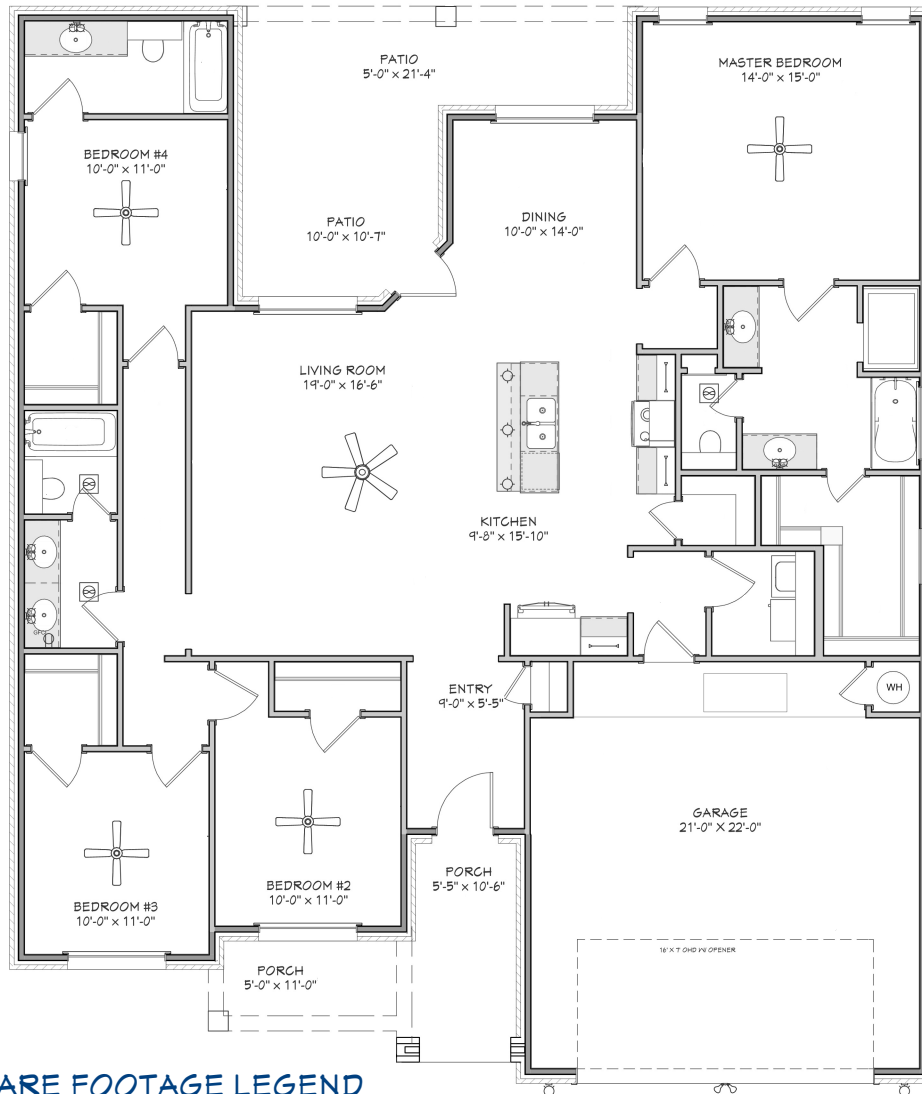





 Christie Homes
The TOWNNES
 +/- 1974 sq. ft.

"Through Wisdom a House is Built, and by Understanding it is Established." Proverbs 24:3



SQUARE FOOTAGE LEGEND

MAIN FLOOR	1974 SQ. FT.
PORCH/ PATIO	324 SQ. FT.
GARAGE	462 SQ. FT.
TOTAL UNDER ROOF	2760 SQ. FT.
PLAN WIDTH	50'-0"
PLAN DEPTH	58'-3"



Christiehomes.net

(Prices, room sizes and sq. ft. may vary and are subject to change.)

Use of floor plans, elevations and renderings as designer's concepts and are the property of Christie Homes, Inc. Use of floor plans, elevations, and or renderings in part or in whole is a violation of federal copyright laws and will be prosecuted to the fullest extent of the law.