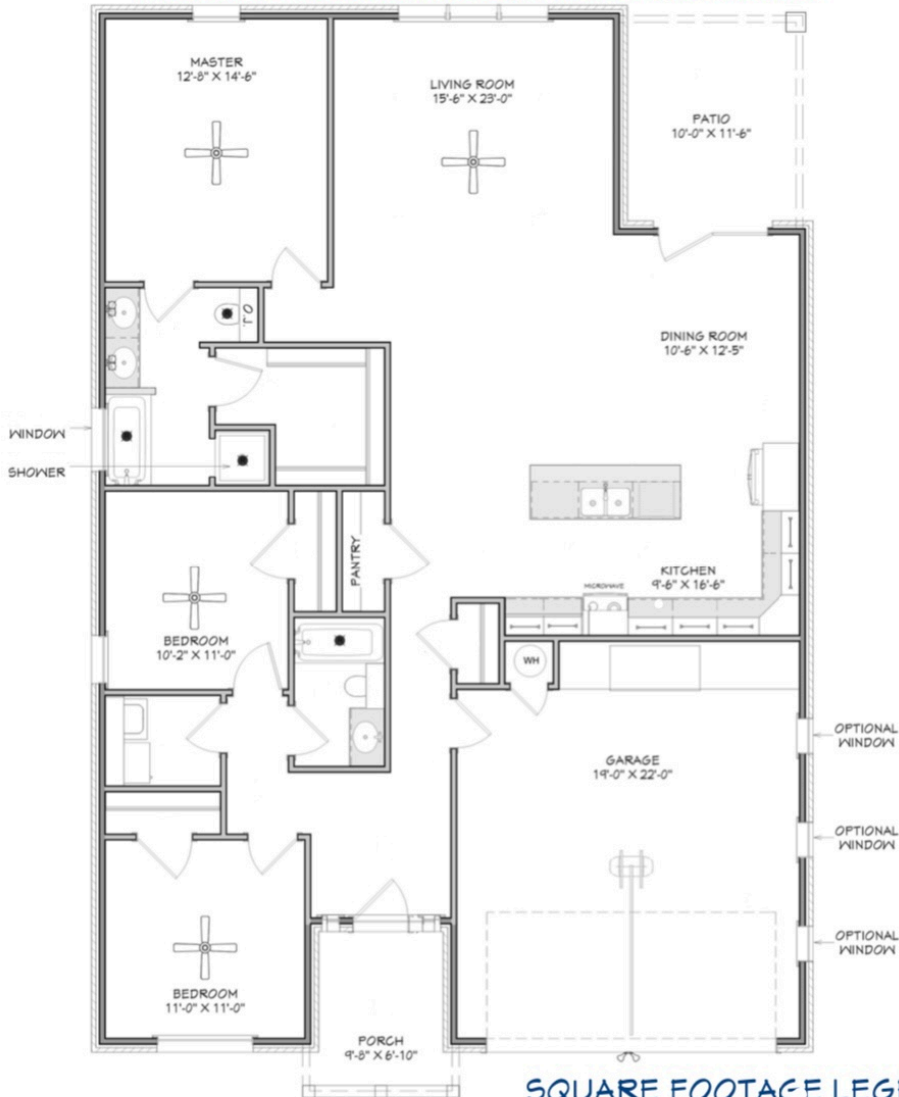





 Christie Homes
The TYLER
 +/- 1694 sq. Ft.

"Through Wisdom a House is Built, and by Understanding it is Established"



SQUARE FOOTAGE LEGEND

MAIN FLOOR	1694 SQ. FT.
PORCH/ PATIO	230 SQ. FT.
GARAGE	451 SQ. FT.
TOTAL UNDER ROOF	2375 SQ. FT.
PLAN WIDTH	40'-0"
PLAN DEPTH	57'-11"



Christiehomes.net

(Prices, room sizes and sq. ft. may vary and are subject to change.)
 Use of floor plans, elevations and renderings as designer's concepts and are the property of Christie Homes, Inc. Use of floor plans, elevations, and or renderings in part or in whole is a violation of federal copyright laws and will be prosecuted to the fullest extent of the law.