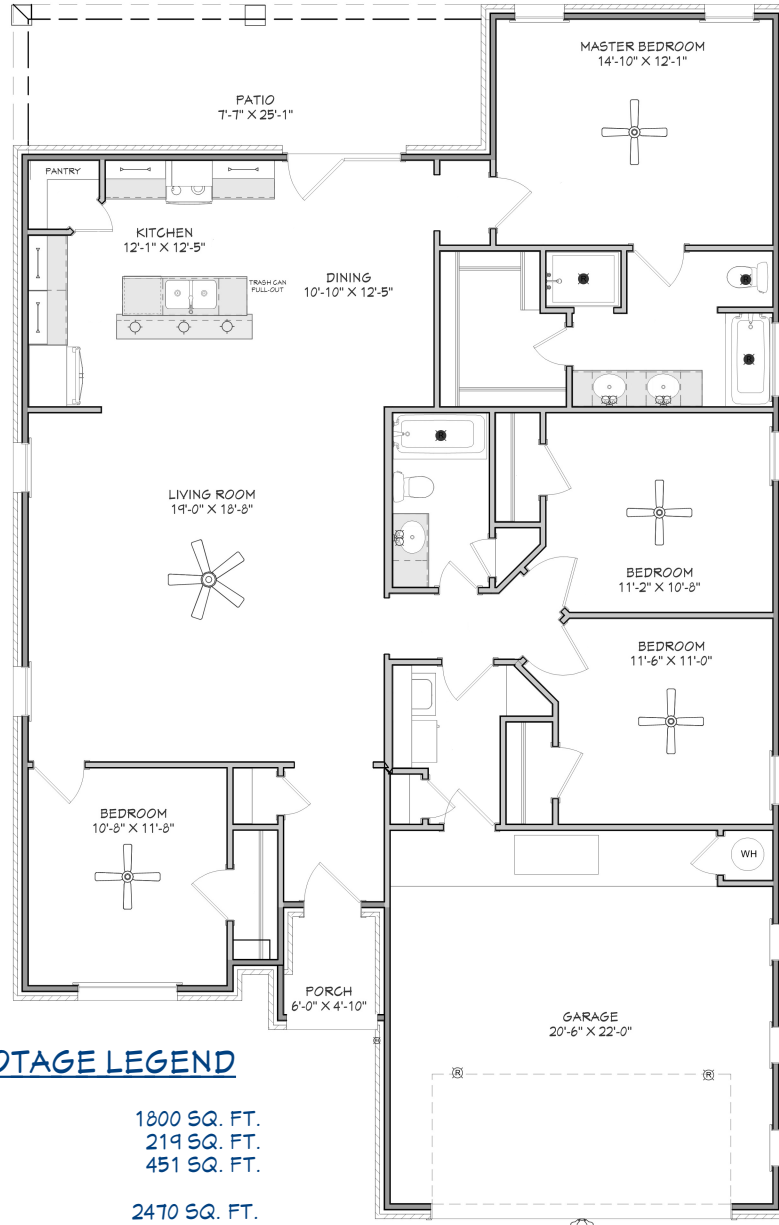




**ch**  
Christie Homes  
**The BRIGGS**  
+/- 1800 sq. ft.

"Through Wisdom a House is Built, and by Understanding it is Established." Proverbs 24:3



### SQUARE FOOTAGE LEGEND

MAIN FLOOR	1800 SQ. FT.
PORCH/ PATIO	219 SQ. FT.
GARAGE	451 SQ. FT.
<b>TOTAL UNDER ROOF</b>	<b>2470 SQ. FT.</b>
PLAN WIDTH	41'-5"
PLAN DEPTH	65'-0"



[Christiehomes.net](http://Christiehomes.net)

(Prices, room sizes and sq. ft. may vary and are subject to change.)

Use of floor plans, elevations and renderings are designer's concepts and are the property of Christie Homes, Inc. Use of floor plans, elevations, and or renderings in part or in whole is a violation of federal copyright laws and will be prosecuted to the fullest extent of the law.