

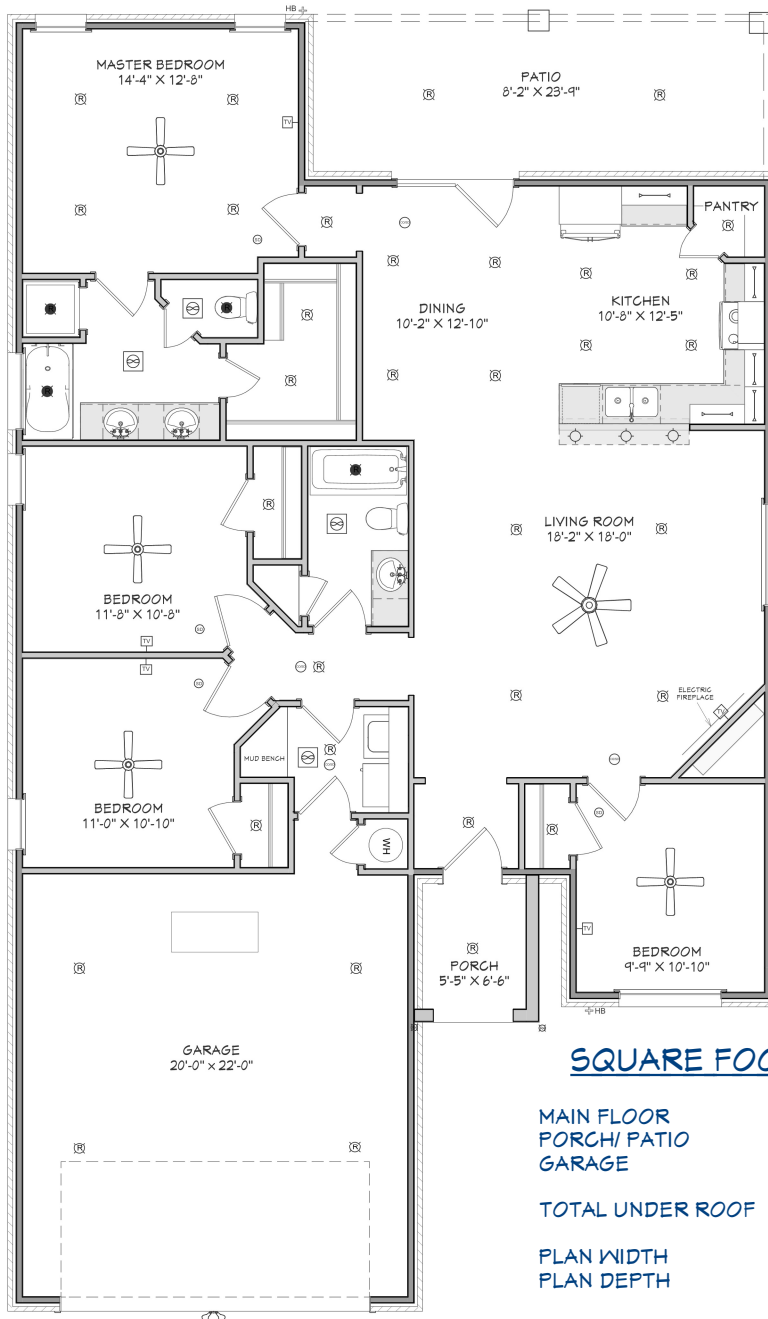


Christie Homes

The CAMBRY

+/- 1652 sq. ft.

"Through Wisdom a House is Built, and by Understanding it is Established." Proverbs 24:3



SQUARE FOOTAGE LEGEND

MAIN FLOOR	1652 SQ. FT.
PORCH/ PATIO	230 SQ. FT.
GARAGE	440 SQ. FT.
TOTAL UNDER ROOF	2322 SQ. FT.
PLAN WIDTH	40'-0"
PLAN DEPTH	67'-4"



Christiehomes.net

(Prices, room sizes and sq. ft. may vary and are subject to change.)

Use of floor plans, elevations and renderings are designer's concepts and are the property of Christie Homes, Inc. Use of floor plans, elevations, and or renderings in part or in whole is a violation of federal copyright laws and will be prosecuted to the fullest extent of the law.